

Department of Mineral Resources

Mine Health and Safety Inspectorate Eastern Cape Region Regional Tripartite Forum 12 March 2020

REGIONAL PERSPECTIVE



www.dmr.gov.za



Department of Mineral Resources



@DMR_SA



mineral resources

Department:
Mineral Resources
REPUBLIC OF SOUTH AFRICA

T M DOYLE
Principal Inspector



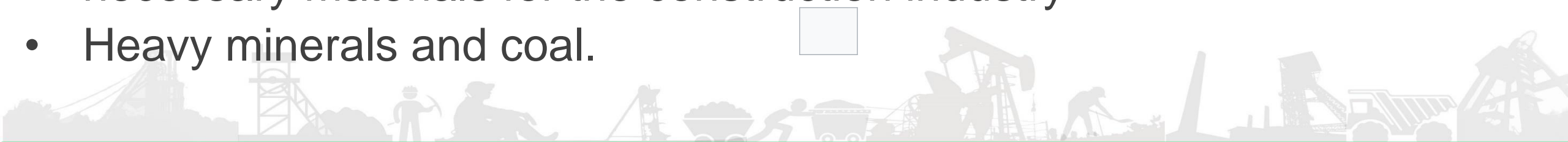
Presentation Outline

1. Background
2. Occupational Safety
3. Occupational Health
4. Close



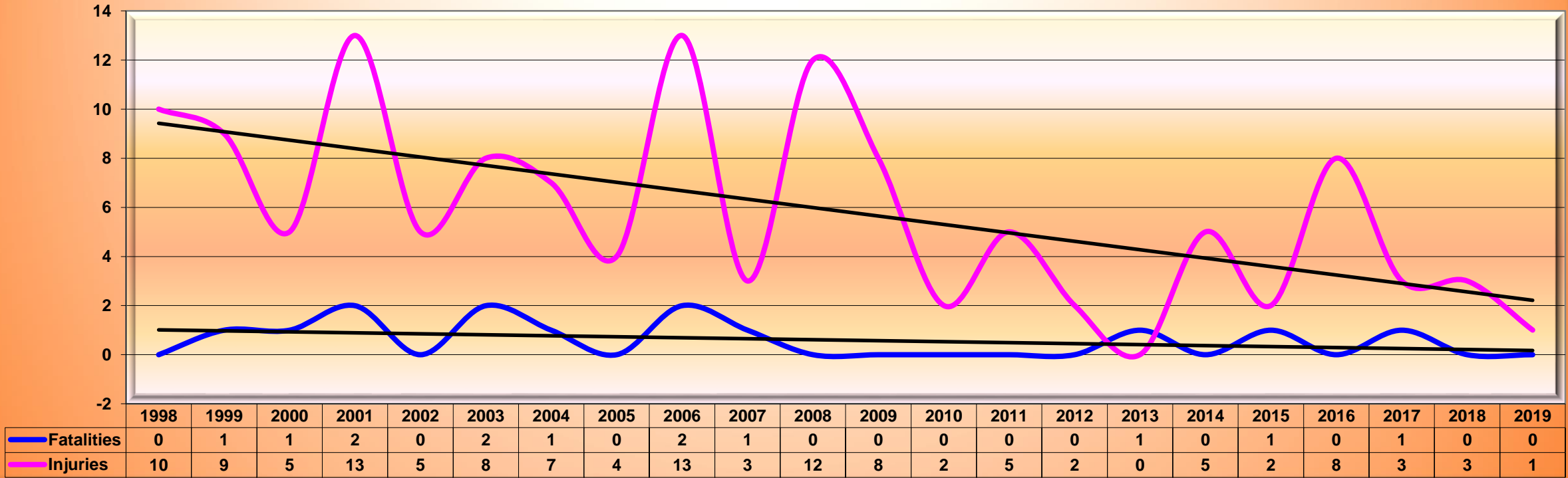
Background

- EC Second largest SA Province approximately 169 580 km²
- Fourth largest in terms of population (6.7M or 11.4%)
- Inhabited with almost seven million people who speak mainly Isixhosa, Afrikaans and English
- Some 420 registered mining operations
- Approximately 246 operational mining operations
- Over 2000 people in the medium and high risk operations
- Mainly sand, hard rock, gravel and clay quarries to provide the necessary materials for the construction industry
- Heavy minerals and coal.



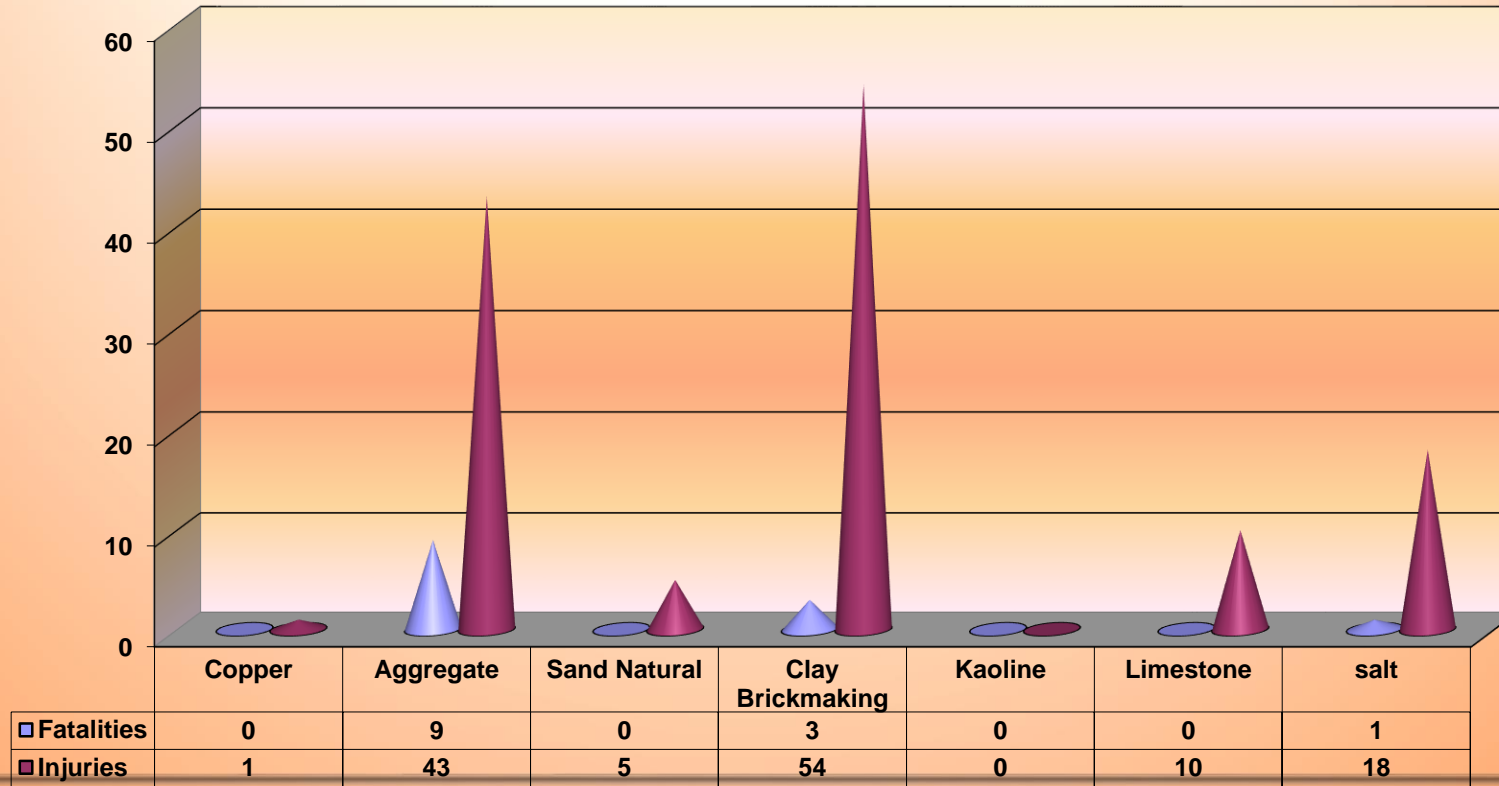
Occupational Safety

Eastern Cape Region
Actual fatalities and injuries 1998 - 2019



Occupational Safety

Eastern Cape Region Fatalities and injuries per commodity 1992 - 2019



mineral resources

Department:
Mineral Resources
REPUBLIC OF SOUTH AFRICA



Occupational Safety

	Fatalities*						Injuries*		
	Actual						Actual		
	01/01/2019 - 09/03/2019	01/01/2020 - 09/03/2020	% change	Total fatal accidents** 2019	Total fatal accidents** 2020	% change	01/01/2019 - 09/03/2019	01/01/2020 - 09/03/2020	% change
Total	6	11	83	6	9	50	430	240	-44
Gold	2	6	200	2	4	100	107	94	-12
Coal	1	1	0	1	1	0	53	30	-43
Platinum	0	3	300	0	3	300	217	77	-65
Other	3	1	-67	3	1	-67	53	39	-26

* Provisional figures

Region	Fatalities*						Injuries*		
	Actual						Actual		
	01/01/2019 - 09/03/2019	01/01/2020 - 09/03/2020	% change	Total fatal accidents	Total fatal accidents	% change	01/01/2019 - 09/03/2019	01/01/2020 - 09/03/2020	% Change
Total	6	11	83	6	9	50	430	240	-44
Western Cape	0	0	0	0	0	0	2	0	-200
Northern Cape	1	1	0	1	1	0	23	9	-61
Free State	1	1	0	1	1	0	35	23	-34
Eastern Cape	0	0	0	0	0	0	0	0	0
KwaZulu/Natal	0	1	100	0	1	100	8	2	-75
Mpumalanga	1	0	-100	1	0	-100	49	34	-31
Limpopo	1	1	0	1	1	0	29	29	0
Gauteng	0	4	400	0	2	200	60	56	-7
Klerksdorp	1	1	0	1	1	0	18	20	11
Rustenburg	1	2	100	1	2	100	206	67	-67



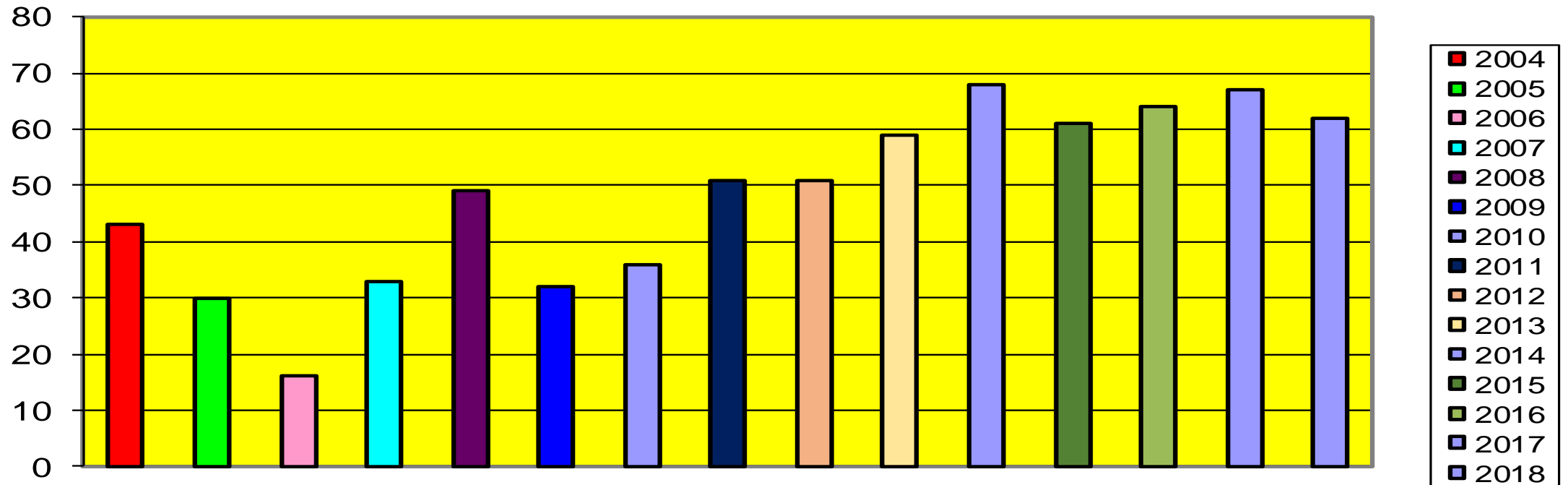
mineral resources

Department:
Mineral Resources
REPUBLIC OF SOUTH AFRICA



Occupational Health

Eastern Cape Annual Medical Record 2004-2018

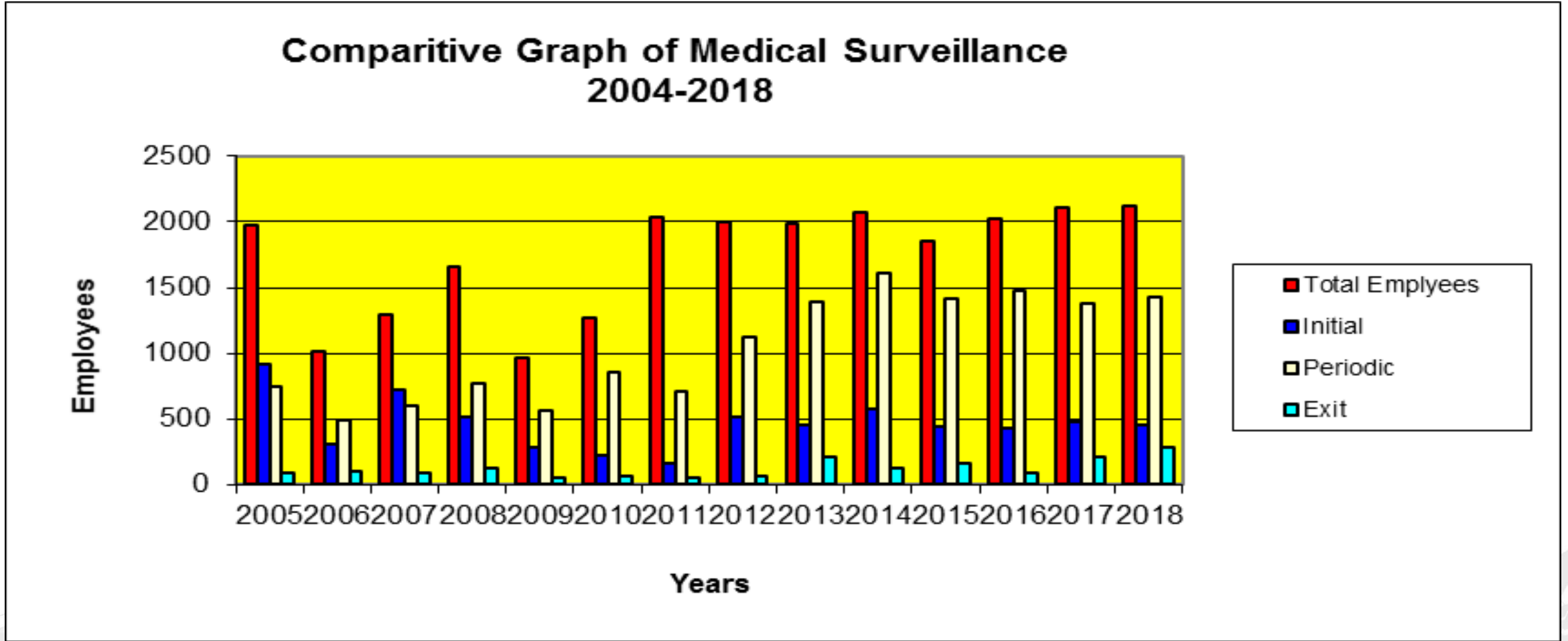


mineral resources

Department:
Mineral Resources
REPUBLIC OF SOUTH AFRICA

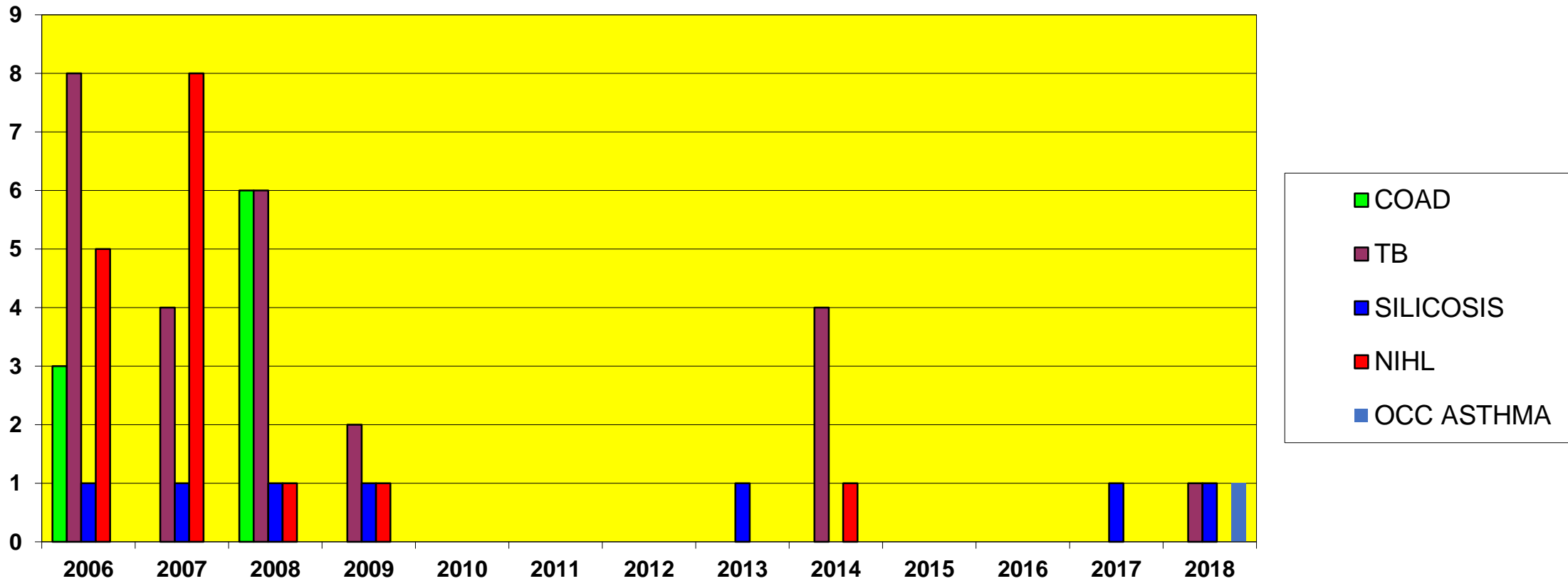


Occupational Health



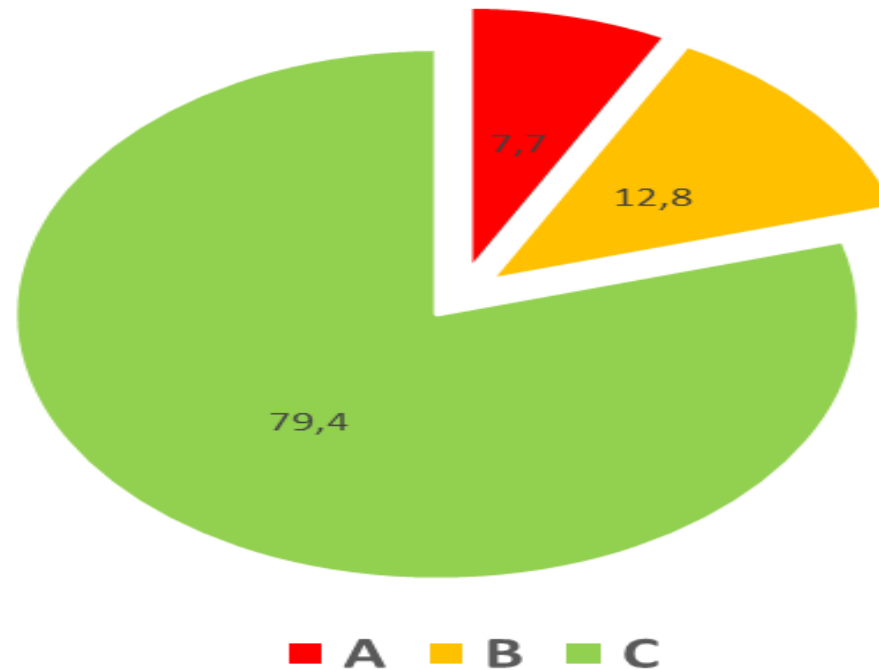
Occupational Health

Diseases reported 2006-2018



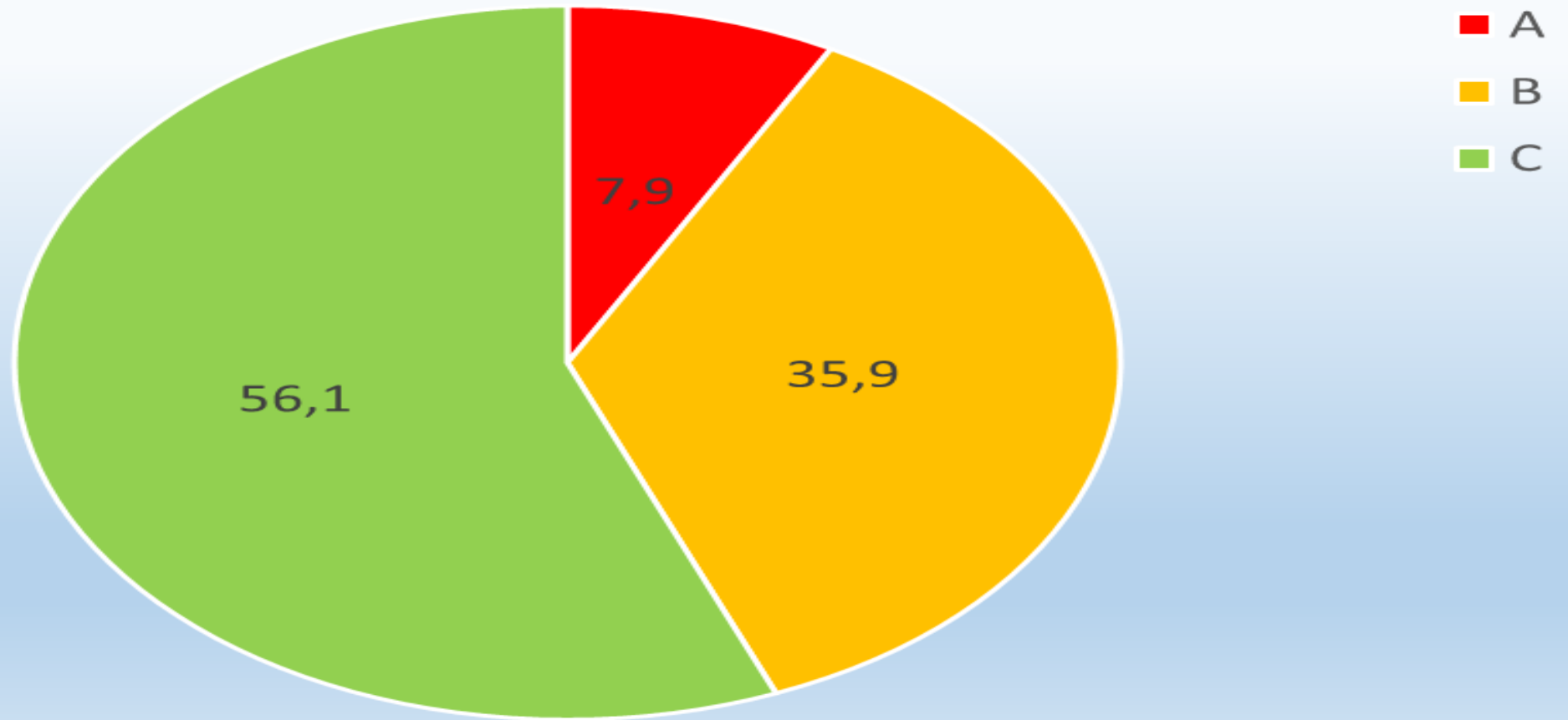
Occupational Health

Total Dust Exposure per Classification Band -



Occupational Health

Total Noise Exposure per Classification Band -



Close

Questions?

Thank you 😊

